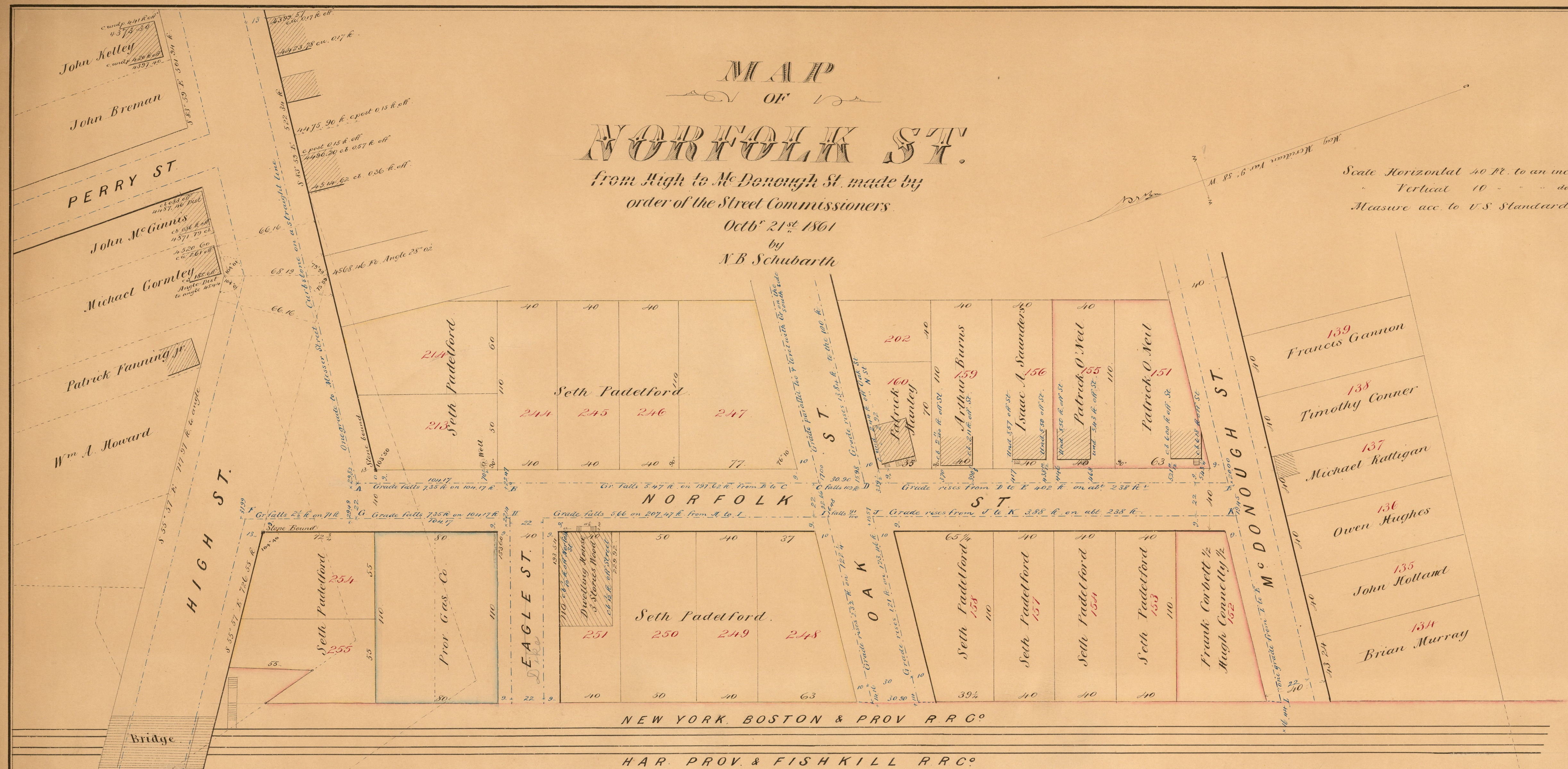


MAP OF NORFOLK ST.

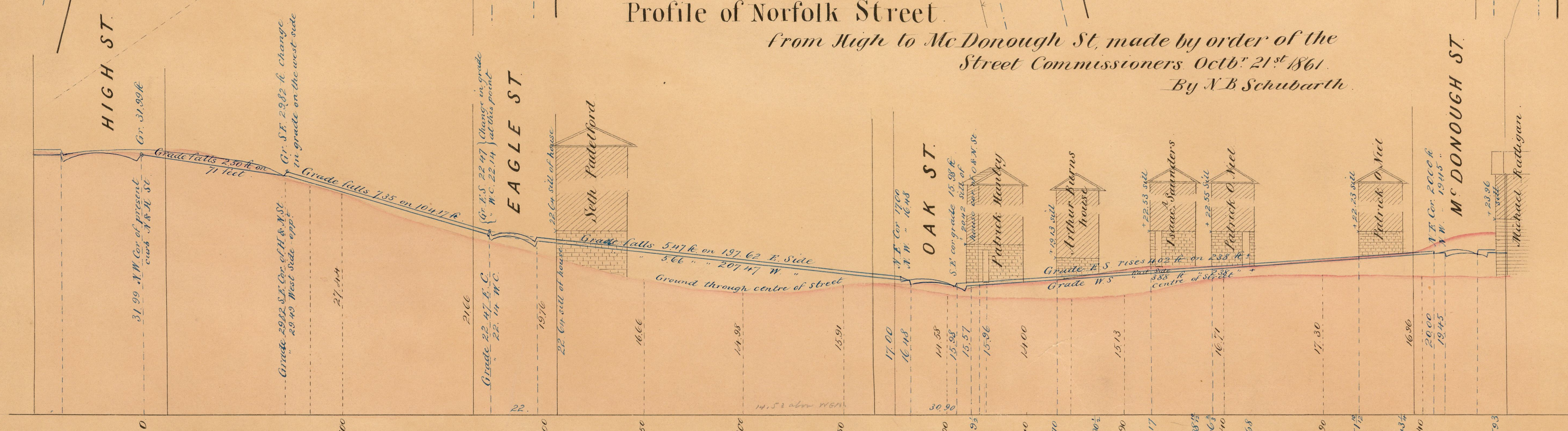
From High to Mc Donough St. made by
order of the Street Commissioners.

Oct. 21st 1861
by
N.B. Schubarth

Scale Horizontal 40 ft. to an inch
Vertical 10 " " " "
Measure acc. to U.S. Standard.



Profile of Norfolk Street.
From High to Mc Donough St. made by order of the
Street Commissioners Oct. 21st 1861
By N.B. Schubarth.



Note
The lots on this Map are numbered
to correspond with the Assessors Maps.
The blue lines and figures have reference to
the grade and offsets of houses.
cb stands for corner board.
and " " " " underpinning
" " " " more or less

OFFICE No. 5444
DRAWER " 61
SHEET " A-8

City of Providence
Street Commissioners Office Oct. 21st 1861.

The undersigned have caused this Map of Norfolk Street to be made, defining the
lines of said Street also showing the grade, width of Side Walks &c as established by this
Board.

Josiah Sumner
Edward Field
Wm. H. Townsend } St. Commissioners.

COMPARED.
Alfred H. Combe

Copied from Plat Book 5 p 25.

Grade of Norfolk St. From High to Mc Donough St.
East side - Beginning at the grade of High St. (as said grade continued on a straight line from Messer Street) at a point 7¹/₁₀₀ ft. above sill of Seth Padelford's house (S.W. cor. of N.B. St.) thence one grade to opposite N.W. Cor. of Curbstone of Eagle St. falling 7¹/₁₀₀ ft. on 104¹/₁₀₀ ft.; thence one grade to Oak St. falling 5¹/₁₀₀ ft. on 197¹/₁₀₀ ft.; thence across Oak St. falling 1¹/₁₀₀ ft. on 30¹/₁₀₀ ft. to a point 4¹/₁₀₀ ft. below sill of Patrick Hanley's house; thence one grade to Mc Donough St. rising 4¹/₁₀₀ ft. on abt. 238 ft. - to a point 2¹/₁₀₀ ft. below sill of Patrick O. Neel's house. West Side - One grade from the grade of High St. to opposite S.E. Corner of curbstone of N.W. St. falling 2¹/₁₀₀ ft. on 71 ft. to a point 4 in. below opposite grade; thence one grade to Eagle St. falling 7¹/₁₀₀ ft. on 104¹/₁₀₀ ft. thence one grade to Oak St. falling 5¹/₁₀₀ ft. on 197¹/₁₀₀ ft. to a point 3¹/₁₀₀ ft. below sill of Patrick Hanley's house; thence across Oak St. falling 1¹/₁₀₀ ft. on 30¹/₁₀₀ ft. thence one grade to Mc Donough St. rising 4¹/₁₀₀ ft. on abt. 238 ft. to a point 2¹/₁₀₀ ft. below sill of Patrick O. Neel's house. Side Walk 3 ft. wide - Travelway 22 ft. wide.